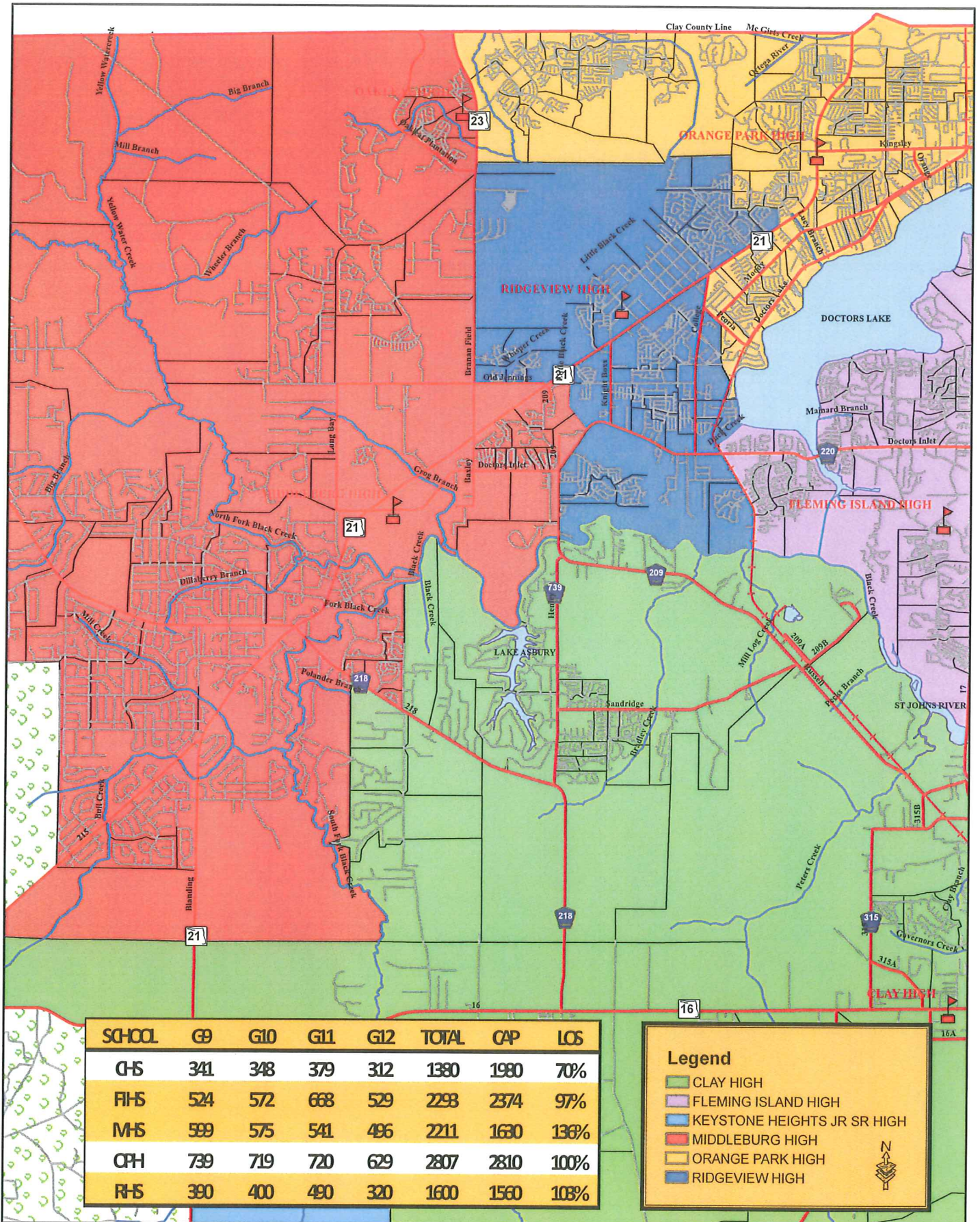


# CURRENT\_HS\_ZONES\_0910

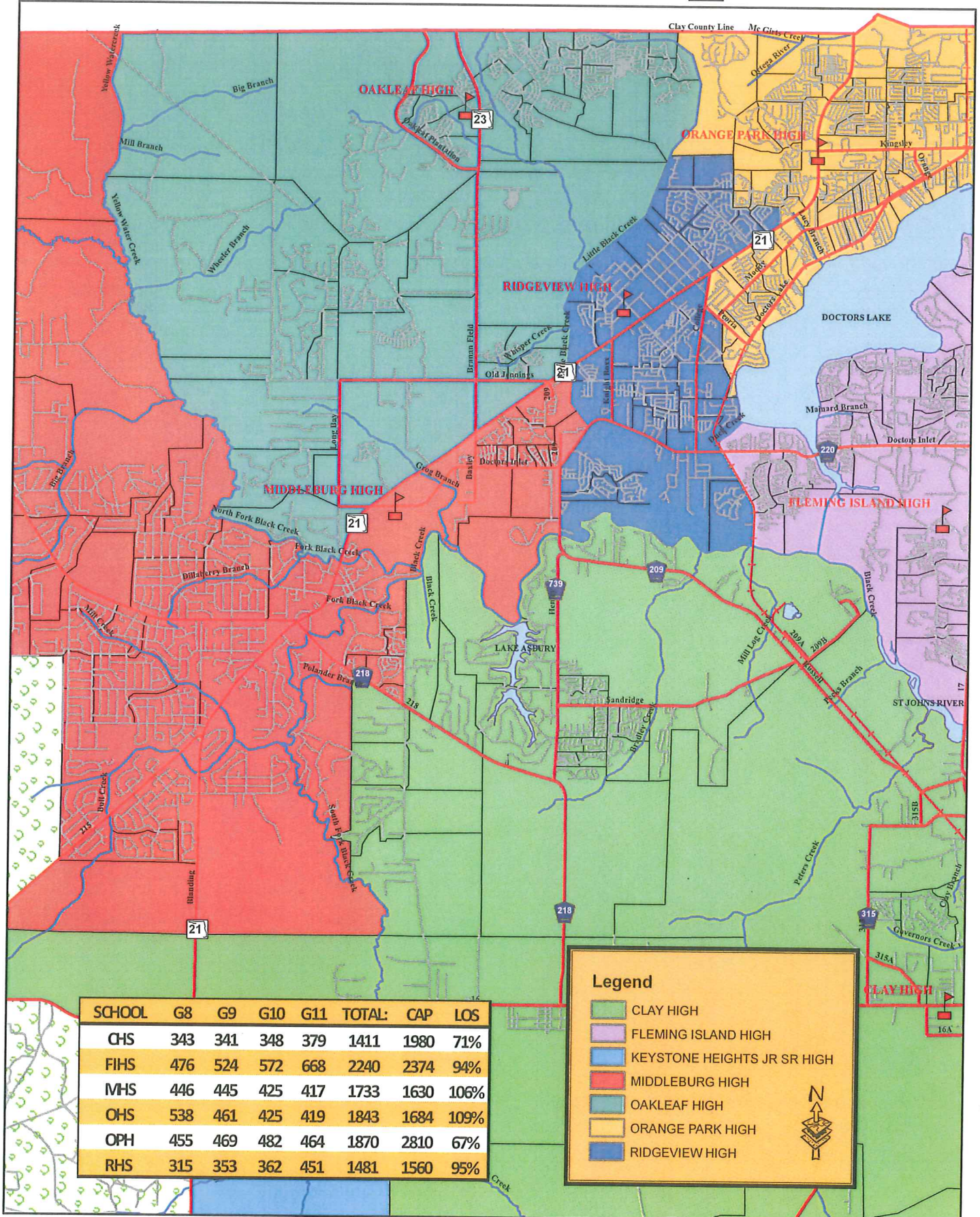


SCHOOL	G0	G10	G11	G12	TOTAL	CP	LOS
CHS	341	348	379	312	1380	1980	70%
FHS	524	572	668	529	2293	2374	97%
MHS	599	575	541	496	2211	1630	136%
OPH	739	719	720	629	2807	2810	100%
RHS	390	400	490	320	1600	1560	103%

**Legend**

- CLAY HIGH
- FLEMING ISLAND HIGH
- KEYSTONE HEIGHTS JR SR HIGH
- MIDDLEBURG HIGH
- ORANGE PARK HIGH
- RIDGEVIEW HIGH

# CONCEPT\_1\_OHS\_1011



SCHOOL	G8	G9	G10	G11	TOTAL:	CAP	LOS
CHS	343	341	348	379	1411	1980	71%
FIHS	476	524	572	668	2240	2374	94%
MHS	446	445	425	417	1733	1630	106%
OHS	538	461	425	419	1843	1684	109%
OPH	455	469	482	464	1870	2810	67%
RHS	315	353	362	451	1481	1560	95%

**Legend**

- CLAY HIGH
- FLEMING ISLAND HIGH
- KEYSTONE HEIGHTS JR SR HIGH
- MIDDLEBURG HIGH
- OAKLEAF HIGH
- ORANGE PARK HIGH
- RIDGEVIEW HIGH



# Concept\_1\_OHS\_1011

## Notes for overall Redistricting:

- Student numbers based on where a student resides within the School District
- Student numbers do not account for Home Schools or Special Pupil Assignments (SPRs)
- Student Numbers do not account for Vocational Academies assignments
- Major State Park; Large Land Mass within Concurrency Service Area (CSA)
- Each concept provides a cumulative approach to assigning CSAs least to most intrusive

## OHS Boundaries:

- Western Boundary: South from where Clay-Duval county line intersects with center line of Yellow Water Creek to the intersection of centerline of the North Fork Black Creek; south to intersection of centerline of North Fork Black Creek and centerline of State Road 21 (SR 21)
- Follow the centerline of SR 21 north until it intersects with the centerline of Little Black Creek; go north along centerline of Little Black Creek till the centerline of Little Black Creek intersects with South Range 25 East; then north along the South Range 25 east until it intersects with Section 34, Township 3 and the Clay-Duval county line. Then west along the Clay-Duval county line to the intersection of the centerline of Yellow Water Creek

## High Schools with Level Of Service (LOS) Affected:

- RHS from a LOS 104% to 95% (max LOS is 110% for all schools)
- MHS from a LOS 133% to 106%
- OPH from a LOS capacity 100% to 67%
- OHS opening with 109%

## Positives:

- Neighborhood concept intact
- Minimal disruption to student body (other High Schools)
- Use of natural boundaries for OHS (CSA)
- Bus Routes reasonable in length

## Negatives:

- Does not relieve MHS to less than 100% LOS
- OHS opens over 100% (with 9-12)
- Future Growth allowance for MHS and OLS slim
- Reduces OPH to less than 70%

Student Capacity For "Concept 01" 2009/10 thru SY 2014/15 (Based on DOE 2009 COFTE)

School Code	SCHOOL NAME	Total FISH Capacity	Core (Cafeteria + multipurpose area)	FISH or Core Cap. (lesser of)	SY 10/11		SY 11/12		SY 12/13		SY 13/14		SY 14/15	
					CCSD Projected Enroll.	FISH or Core Capacity (lesser of)	Util.	COFTE Enroll.	FISH or Core Capacity (lesser of)	Util.	COFTE Enroll.	FISH or Core Capacity (lesser of)	Util.	COFTE Enroll.

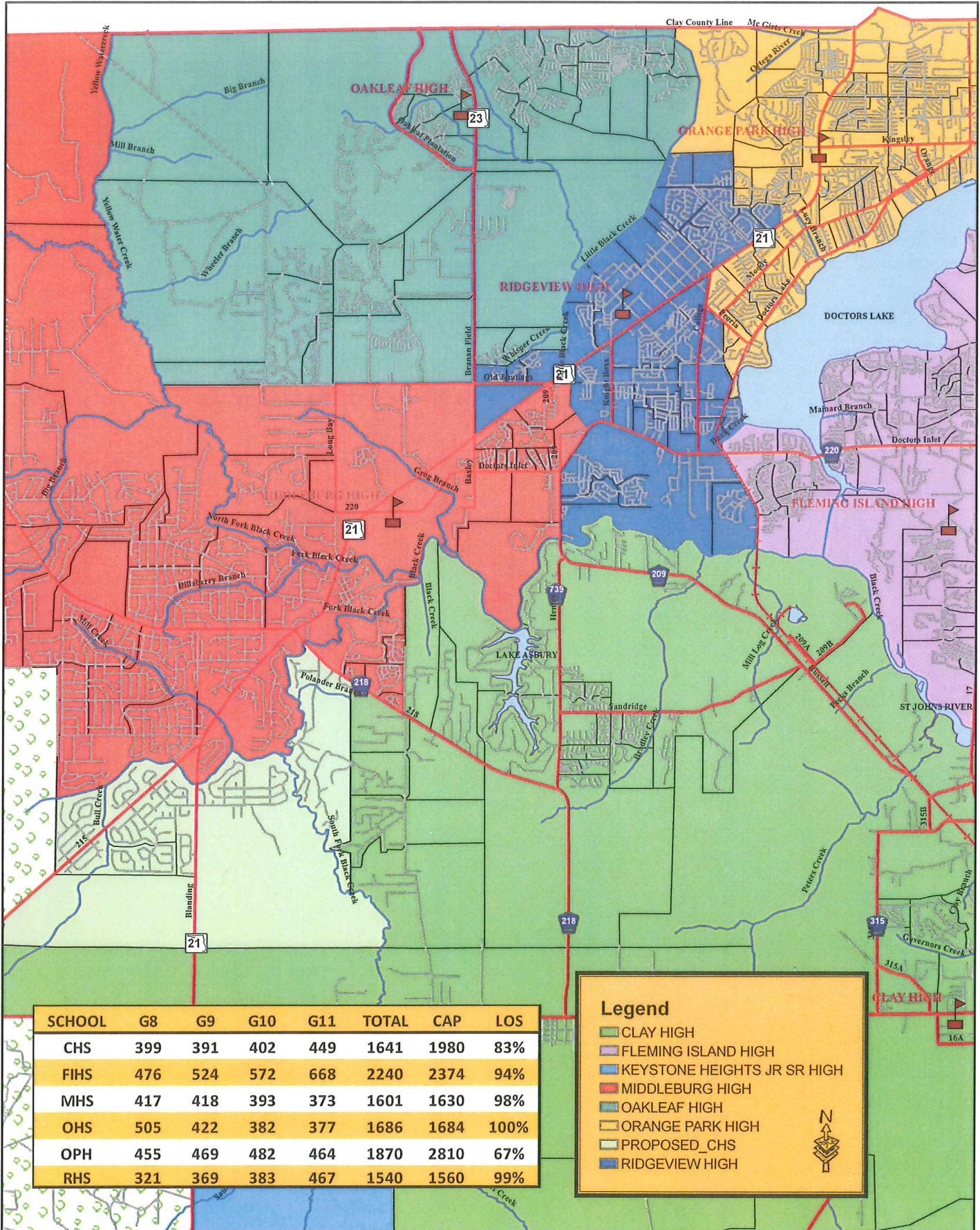
High School 2009-13

CHS	Clay High	1980	2170	1990	1411	1990	71%	1306	1980	66%	1299	1980	66%	1304	1980	66%	1315	1980	66%
FH	Fleming Island High	2374	2480	2374	2240	2374	94%	2073	2374	87%	2062	2374	87%	2070	2374	87%	2087	2374	88%
MHS	Middleburg High	2468	1630	1630	1733	1630	106%	1604	1630	98%	1595	1630	98%	1602	1630	98%	1615	1630	99%
OPH	Orange Park High	3232	2810	2810	1870	2810	67%	1731	2810	62%	1721	2810	61%	1728	2810	61%	1742	2810	62%
RHS	Ridgeview High	2627	1560	1560	1481	1560	95%	1371	1560	88%	1363	1560	87%	1369	1560	88%	1380	1560	89%
OHS	Oakleaf High School (QQQ)	1684	2250	1684	1843	1684	109%	1706	1684	101%	1696	1684	101%	1703	1684	101%	1717	1684	102%
<b>Combination / Other 2009-13</b>		<b>14365</b>	<b>12900</b>	<b>12038</b>	<b>10578</b>	<b>12038</b>	<b>88%</b>	<b>9791</b>	<b>12038</b>	<b>81%</b>	<b>9736</b>	<b>12038</b>	<b>81%</b>	<b>9776</b>	<b>12038</b>	<b>81%</b>	<b>9856</b>	<b>12038</b>	<b>82%</b>

BLC	Bannerman Learning Center	526	330	330		330	0%		330	0%		330	0%		330	0%		330	0%
KHHS	Keystone Heights High (-12)	1458	2130	1458	764	1458	52%	764	1458	52%	760	1458	52%	763	1458	52%	769	1458	53%
<b>Total:</b>		<b>1984</b>	<b>2460</b>	<b>1788</b>	<b>764</b>	<b>1788</b>	<b>43%</b>	<b>764</b>	<b>1788</b>	<b>43%</b>	<b>760</b>	<b>1788</b>	<b>43%</b>	<b>763</b>	<b>1788</b>	<b>43%</b>	<b>769</b>	<b>1788</b>	<b>43%</b>
<b>Student Total:</b>					<b>11342</b>			<b>10555</b>			<b>10496</b>			<b>10539</b>			<b>10625</b>		
<b>DOE Capital Outlay FTE Forecast (COFTE):</b>					<b>10824</b>			<b>10496</b>			<b>10495</b>			<b>10540</b>			<b>10625</b>		

111222343	Indicates new student number
111222343	LOS Exceeds 100%
112234	LOS Exceeds 110%
112234	Indicates New Capacity

# CONCEPT\_2\_OHS\_1011



# Concept \_02\_OHS\_1011

## Notes for overall Redistricting:

- Student numbers based on where a student resides within the School District
- Student numbers do not account for Home Schools or Special Pupil Assignments (SPRs)
- Student Numbers do not account for Vocational Academies assignments
- Major State Park; Large Land Mass within Concurrency Service Area (CSA)

## OHS Boundaries:

- Western Boundary: South from where Clay-Duval county line intersects with center line of Yellow Water Creek to the intersection of center line of North Fork Black Creek south to intersection of centerline of the North Fork Black Creek with Southern Section line of Section 28 Range 24, East Township 4 South 6; then east to centerline of Old Jennings Road.
- Follow the centerline of Old Jennings Road east until it intersects with centerline of Branan Field Road, go north on the centerline of Branan Field Road until it intersects with the centerline of Whisper Creek go east along centerline of Whisper Creek until it intersects with the centerline of Black Creek then follow the centerline of Little Black Creek north until it intersects with South Range 25 east then north along South Range 25 east until the intersection of township 3 section 34 and Clay-Duval county line; Go west from intersection of centerline of Little Black Creek and Clay-Duval county line until the Clay-Duval county line intersects with the centerline of Yellow Water Creek.

## MHS/RHS boundary changes:

- Remain as in Concept 01

## MHS/CHS boundary changes:

- Move study areas 343, 342, 348, 376, 375, 372, 370, 376, 374, 373, 372, 371, Approx 179 students from MHS to CHS.
- From the intersection of CR 218 and the centerline of South Fork Black Creek; thence south along the centerline of South Fork Black Creek until the intersection of centerline of Mill Creek; thence west southwest along the centerline of Mill Creek until it intersects with the centerline of Bull Creek then west southwest along the centerline of Bull Creek until it intersects with eastern boundary of eastern most section line of Section 30 Range 24 East, Township 5 South; (eastern boundary of Camp Blanding) thence south along the section line until it intersects with the Northeast corner of Section 7, Range 24 East, Township 5 South thence east on the section line to the southeast corner of

section 2 Range 24 east, Township 6 South; thence north along this section line to the centerline CR 218, thence west on CR 218 until it intersects with centerline of SR 21 of the South Fork Black Creek then east until it intersects with and the centerline of South Fork Black Creek than north along the centerline of South Fork Black Creek until it intersects with CR 218; then south along the centerline of CR 218 until it intersects with the centerline of SR 21.

**High Schools with Level Of Service (LOS) Affected:**

- RHS from a LOS 104% to 99% (max LOS is 110% for all schools)
- MHS from a LOS 133% to 98%
- OPH from a LOS capacity 105% to 67%
- OHS opens with 100%
- CHS from a LOS capacity 71% to 83%

**Positives:**

- Neighborhoods remain intact
- Use of natural boundaries for OHS (CSA)
- Reduces MHS LOS to 98% allowing for potential growth
- CHS School Boundary already extends to Kingsley Lake area
- Increases CHS student numbers

**Negatives:**

- Bus Routes could be conceived as unreasonable in length and time to CHS from CR 218 (Approx. 18/20 miles to CHS)

Student Capacity For "Concept 02" 2009/10 thru SY 2014/15 (Based on DOE 2009 COFTE)

School Code	SCHOOL NAME	Total FISH Capacity	Core (Cafeteria + multipurpose area)	FISH or Core Cap. (lesser of)	SY 10/11		SY 11/12		SY12/13		SY 13/14		SY 14/15	
					CCSD Projected Enroll.	FISH or Core Capacity (lesser of)	Util.	COFTE Enroll.	FISH or Core Capacity (lesser of)	Util.	COFTE Enroll.	FISH or Core Capacity (lesser of)	Util.	

High School 2009-13																
CHS	Clay High	1980	2170	1980	1641	1980	83%	1519	1980	77%	1510	1980	76%	1516	1980	77%
FIH	Fleming Island High	2374	2480	2374	2240	2374	94%	2073	2374	87%	2062	2374	87%	2070	2374	88%
MHS	Middleburg High	2468	1630	1630	1601	1630	98%	1482	1630	91%	1473	1630	90%	1479	1630	91%
OPH	Orange Park High	3232	2810	2810	1870	2810	67%	1731	2810	62%	1721	2810	61%	1728	2810	62%
RHS	Ridgeview High	2627	1560	1560	1540	1560	99%	1425	1560	91%	1417	1560	91%	1423	1560	92%
OHS	Oakleaf High School (OOO)	1684	2250	1684	1686	1684	100%	1560	1684	93%	1552	1684	92%	1558	1684	93%
<b>Combination / Other 2009-13</b>		<b>14365</b>	<b>12900</b>	<b>12038</b>	<b>10578</b>	<b>12038</b>	<b>88%</b>	<b>9790</b>	<b>12038</b>	<b>81%</b>	<b>9735</b>	<b>12038</b>	<b>81%</b>	<b>9774</b>	<b>12038</b>	<b>81%</b>

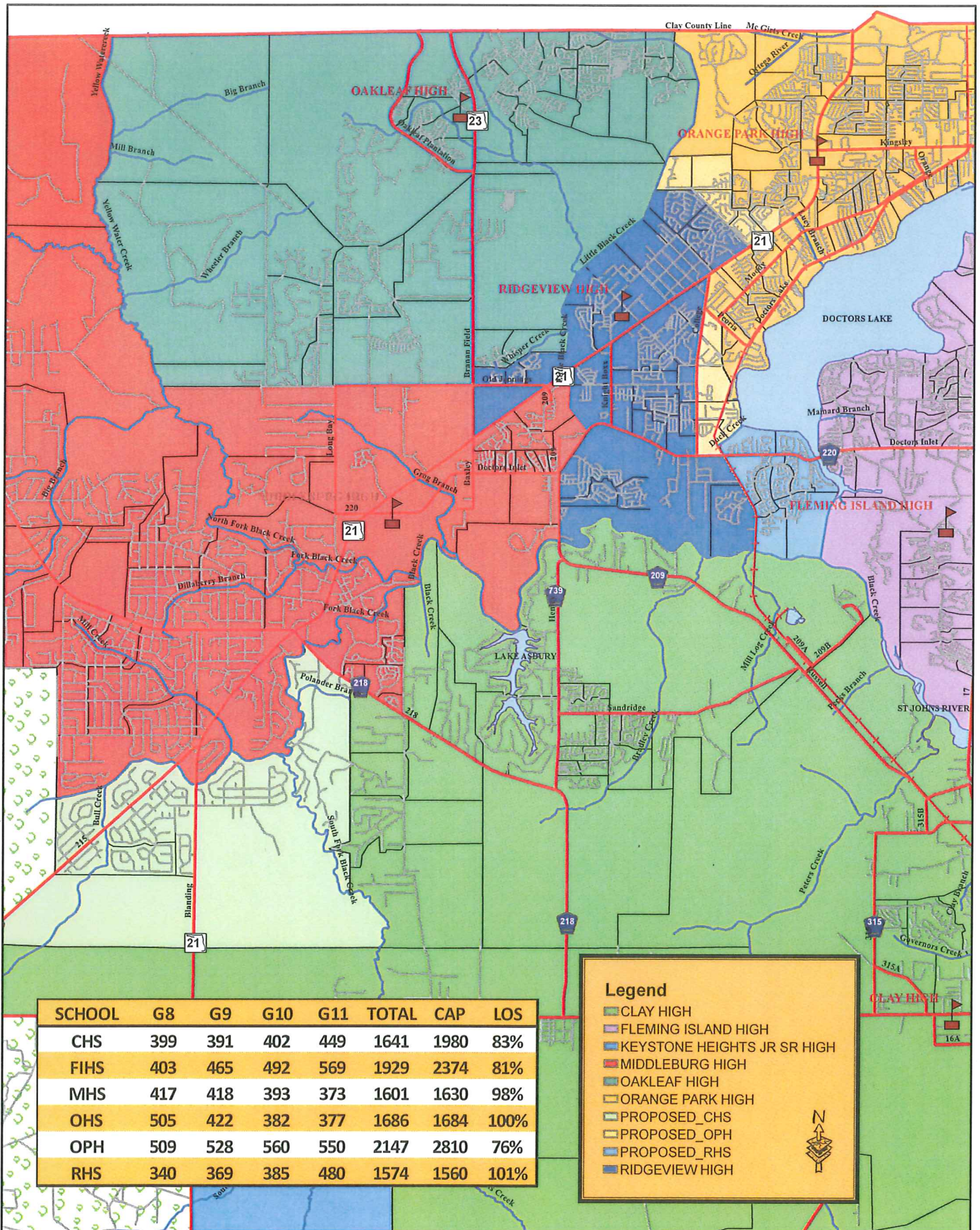
BLC	Bannerman Learning Center	526	330	330		330	0%		330	0%		330	0%		330	0%
KHHS	Keystone Heights High (7-12)	1458	2130	1458	764	1458	52%	707	1458	48%	760	1458	52%	767	1458	53%
<b>Total:</b>		<b>1984</b>	<b>2460</b>	<b>1798</b>	<b>764</b>	<b>1798</b>	<b>43%</b>	<b>707</b>	<b>1798</b>	<b>40%</b>	<b>760</b>	<b>1798</b>	<b>43%</b>	<b>767</b>	<b>1798</b>	<b>43%</b>

Student Total:	11342	10497	10495	10541	10624
DOE Capital Outlay FTE Forecast (COFTE):	10824	10496	10495	10540	10625

111222343	Indicates new student number
112234	Indicates Exceeds 100%
112234	Indicates Exceeds 110%
112234	Indicates New Capacity



# CONCEPT\_3\_OHS\_1011



SCHOOL	G8	G9	G10	G11	TOTAL	CAP	LOS
CHS	399	391	402	449	1641	1980	83%
FIHS	403	465	492	569	1929	2374	81%
MHS	417	418	393	373	1601	1630	98%
OHS	505	422	382	377	1686	1684	100%
OPH	509	528	560	550	2147	2810	76%
RHS	340	369	385	480	1574	1560	101%

**Legend**

- CLAY HIGH
- FLEMING ISLAND HIGH
- KEYSTONE HEIGHTS JR SR HIGH
- MIDDLEBURG HIGH
- OAKLEAF HIGH
- ORANGE PARK HIGH
- PROPOSED\_CHS
- PROPOSED\_OPH
- PROPOSED\_RHS
- RIDGEVIEW HIGH

N

# Concept\_03\_OHS\_1011

## Notes for overall Redistricting:

- Student numbers based on where a student resides within the School District
- Student numbers do not account for Home Schools or Special Pupil Assignments (SPRs)
- Student Numbers do not account for Vocational Academies assignments
- Major State Park; Large Land Mass within Concurrency Service Area (CSA)

## OHS boundaries:

- Remain as in Concept 02

## MHS/CHS boundary changes:

- Remain as in Concept 02

## RHS/OPH/FIH boundary changes:

- Move Study Areas 180, 181, 202, 244, 245; approx 94 students from RHS to OPH
- From the intersection of centerline of SR 21 and College Dr South along College Dr till it intersects with CR220 all area east of College Drive to Doctors Lake
- Move Study Areas 131, 132, 134, 153, 154; approx 182 students from RHS to OPH
- From intersection of the centerline of SR 21 and the centerline of Camp Francis Johnson Road, north along the centerline of Camp Francis Johnson Road till it dead ends into Thornbrooke Court
- This includes all residences on the East side of Camp Francis Johnson Road, all of Darwin Ct, Élan Ct, Gatewood Ct, Rosebay Dr and Thornbrooke Ct
- Move Study areas 243, 242, 281, 280, 279, 278, 283, 284; approx 332 students from FIH to RHS
- From the intersection of centerline of the Railroad Tracks and the centerline of CR 220 move east until intersection of centerline of CR 220 and the centerline of Swimming Pen Creek. This area will include all residences on the north and south side of CR 220 between centerline of Swimming Pen Creek and centerline of Railroad Tracks.

## High Schools with Level Of Service (LOS) Affected:

- RHS from a LOS 104% to 101% (max LOS is 110% for all schools)
- MHS from a LOS 133% to 98%
- OPH from a LOS 105% to 76%
- OHS opens with 100% (grades 9-12)
- CHS from 71% to 81%
- FIH from 97% to 81%

**Positives:**

- Most neighborhoods remain intact
- Use of natural boundaries for OHS
- Reduces MHS LOS to 98% allowing for potential growth
- Balances the student population between the high schools

**Negatives:**

- A lot of small subdivisions and neighborhoods would be affected to achieve student population shift from FIH and RHS and from RHS to OPH.
- Bus routes
- Major shift for the entire county

**Student Capacity For "Concept 03" 2009/10 thru SY 2014/15 (Based on DOE 2009 COFTE)**

School Code	SCHOOL NAME	Total FISH Capacity	Core (Cafeteria + multipurpose area)	FISH or Core Cap. (lesser of)	SY 10/11		SY 11/12		SY12/13		SY 13/14		SY 14/15	
					CCSD Projected Enroll.	FISH or Core Capacity (lesser of)	Util.	COFTE Enroll.	FISH or Core Capacity (lesser of)	Util.	COFTE Enroll.	FISH or Core Capacity (lesser of)	Util.	COFTE Enroll.

**High School 2009-13**

CHS	Clay High	1980	2170	1980	1641	1980	83%	1519	1980	77%	1510	1980	76%	1516	1980	77%	1528	1980	77%
FIH	Fleming Island High	2374	2480	2374	1929	2374	81%	1785	2374	75%	1775	2374	75%	1782	2374	75%	1797	2374	76%
MHS	Middleburg High	2468	1630	1630	1601	1630	98%	1482	1630	91%	1473	1630	90%	1479	1630	91%	1491	1630	91%
OPH	Orange Park High	3232	2810	2810	2147	2810	76%	1987	2810	71%	1976	2810	70%	1984	2810	71%	2000	2810	71%
RHS	Ridgeview High	2627	1560	1560	1574	1560	101%	1457	1560	93%	1449	1560	93%	1454	1560	93%	1466	1560	94%
OHS	Oakleaf High School (OOO)	1684	2250	1684	1686	1684	100%	1560	1684	93%	1552	1684	92%	1558	1684	93%	1570	1684	93%
<b>Combination / Other 2009-13</b>		<b>14365</b>	<b>12900</b>	<b>12038</b>	<b>10578</b>	<b>12038</b>	<b>88%</b>	<b>9790</b>	<b>12038</b>	<b>81%</b>	<b>9735</b>	<b>12038</b>	<b>81%</b>	<b>9773</b>	<b>12038</b>	<b>81%</b>	<b>9852</b>	<b>12038</b>	<b>82%</b>

BLC	Bannerman Learning Center	526	330	330		330	0%		330	0%		330	0%		330	0%		330	0%
KHHS	Keystone Heights High (7-12)	1458	2130	1458	764	1458	52%	707	1458	48%	760	1458	52%	767	1458	53%	773	1458	53%
<b>Total:</b>		<b>1984</b>	<b>2460</b>	<b>1788</b>	<b>764</b>	<b>1788</b>	<b>43%</b>	<b>707</b>	<b>1788</b>	<b>40%</b>	<b>760</b>	<b>1788</b>	<b>43%</b>	<b>767</b>	<b>1788</b>	<b>43%</b>	<b>773</b>	<b>1788</b>	<b>43%</b>
<b>Student Total:</b>					<b>11342</b>			<b>10497</b>			<b>10495</b>			<b>10540</b>			<b>10625</b>		
<b>DOE Capital Outlay FTE Forecast (COFTE):</b>					<b>10824</b>			<b>10496</b>			<b>10495</b>			<b>10540</b>			<b>10625</b>		

111222343  
Indicates new student number  
LOS Exceeds 100%  
112234  
LOS Exceeds 110%  
Indicates New Capacity